



CREMATION CHOICES

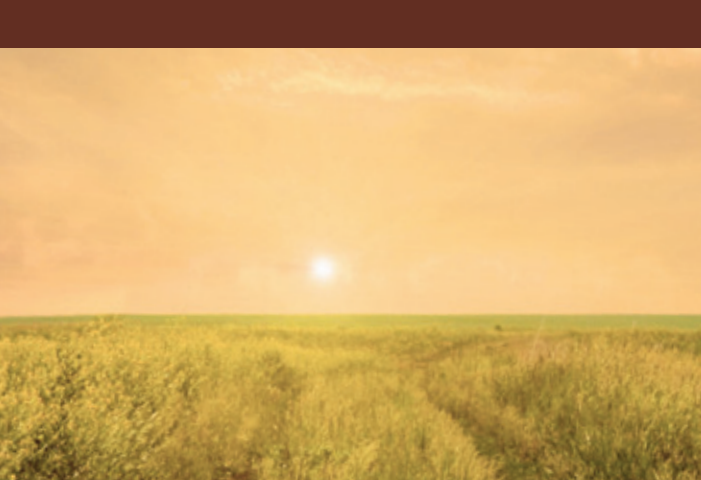


W.C. Town Funeral Chapel
offers your family all of the
modern amenities you want
together with the timeless
values of trust, caring service
and commitment
to the community.





Whether you choose
cremation or a burial plot,
as a family owned business
for fifty years we have
established relationships
with the cemeteries and
crematoriums in our area
and will take the time to
advise your family of all the
choices available to you.



HERE ARE SOME OF THE CHOICES AVAILABLE TO YOUR FAMILY :

Funeral service with Cremation to Follow

This choice appeals to individuals and families who would like to have a more traditional service. With this option, the body is embalmed and placed in a casket of your choosing and typically involves a period of visitation of one to two days or just prior to the service. The cremation then takes place after the service with interment of urn to follow.

Cremation with a Memorial Service

This choice involves performing the cremation with a service to follow. The service may be scheduled soon after the cremation or it may be delayed to allow for family and friends travel schedules. This option also allows for a longer planning process for personalization and family involvement and the service may be as traditional or as contemporary as you like. The cremated remains will be placed in the permanent urn you decide on and may or may not be present at the service. The choice is yours.



Direct Cremation

This choice means that at the time of death, we will transport the body from the place of death to our facility. Once all arrangements and authorizations are completed, the body will be cremated in your container of choice. Following cremation, the cremated remains will be returned to your care. This choice has no type of formalized service or gathering, however services may still be held at a later date.

Cremation with a Graveside Service

This choice blends the cremation service with the tradition of a ground burial, entombment in a niche or interment in a scattering area. The cremation is performed and a brief service is held at the graveside or columbarium niche. This type of service is usually attended by a close group of family and friends.

Did you find your choice?

If not let us know so we can customize our services for your family.

We invite you to contact one of our friendly and caring team members to answer any additional questions you may have about the cremation choices available to your family.

*Experience the difference
a family-owned funeral home can make.*



110 Dundas Street East, Whitby
T 905-668-3410 | F 905-430-3714

wctown.com